

Shower tray support installation instructions

If you carry out installation according to these instructions you have the following advantages:

- subsequent shower tray installation (no danger of damage)
- basin replacement without costly tiling work
- optimum sound insulation (grade II sound insulation) and product liability

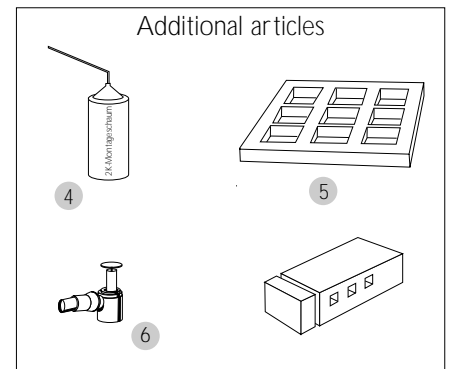
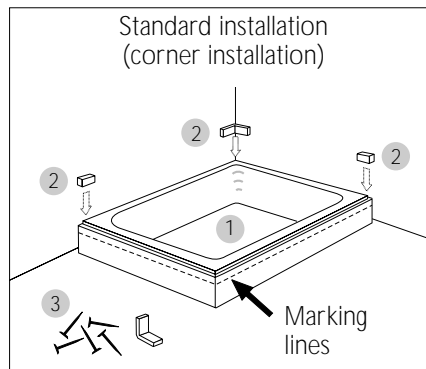
A. SUMMARY

Included in delivery (standard set)

- 1 Shower tray support
- 2 Wall connection elements (4 spacers)
Take out of inspection opening and separate
- 3 Fixing pins

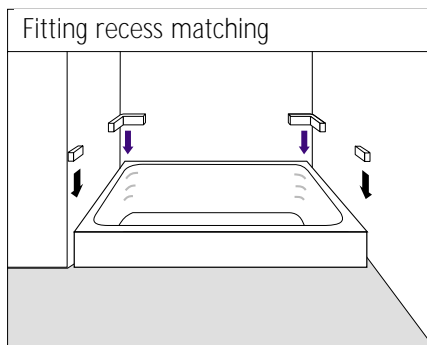
Additional articles:

- 4 Standard hardening builder's foam (e.g. illbruck, D-Bad Wildungen)
- 5 Filling pieces and subconstruction for levelling (e.g. illbruck, D-Bad Wildungen)
- 6 Drainage fitting (e.g. Viega „tempoplex“ for the lowest possible installation height)

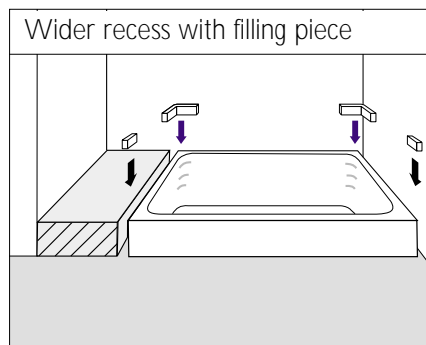


B. INSTALLATION

1. PUTTING TOGETHER THE REQUIRED ELEMENTS FOR DIFFERENT INSTALLATION CASES

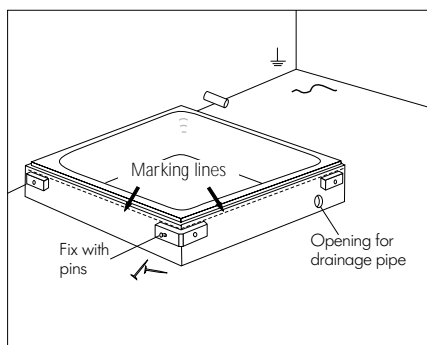


4 wall connection elements

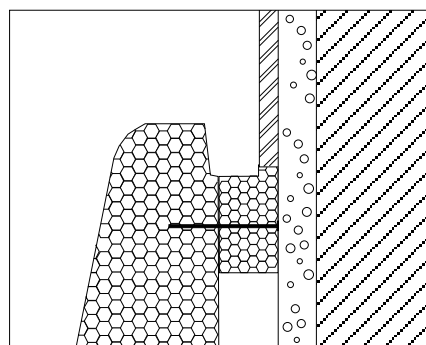


4 wall connection elements, filling piece

2A. PREPARATION FOR TILING



Thin bed tiling



If thick bed tiling is necessary due to conditions on-site, the shower tray support must be moved back from the wall by the necessary bed thickness.

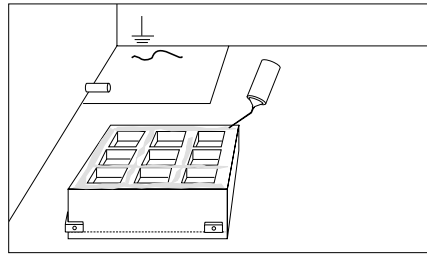
2B. PREPARATION WORK FOR INSTALLATION

Remove wall connection elements from the inspection opening and separate. Fix the wall connection elements you select with the fixing pins to the corner points of the shower tray support following the marking lines (see A. Summary). Cut the opening for drainage pipes and earthing cable to suit conditions on site. If recess is too wide, cut filling piece to suit and fix in place with foam.

3. INSTALLATION

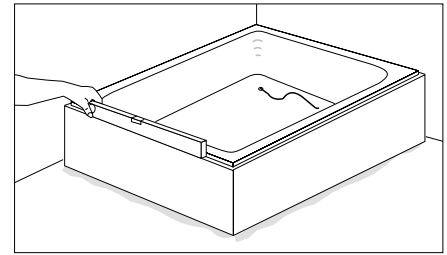
WARNING

- **Tile thickness above 7 mm**
Set the shower tray support back from the wall by the extra tile thickness. The same applies to spacing between shower tray support and bathtubs.
- **Tile thickness above 12 mm**
Front sides to be tiled must be reduced with suitable tools (hot wire devices etc.)
- It is possible that the production tolerances allowed by DIN will make adaptation work on the support necessary.



A. Glue shower support

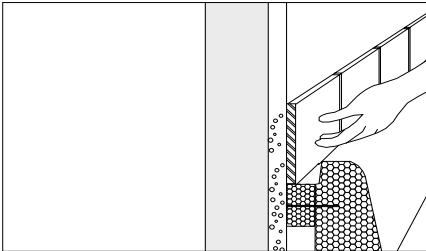
Cut out holes for piping, then apply foam to all floor ribs in the shower tray support before fixing in installation location.



B. Align

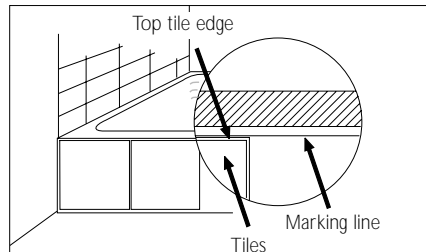
Adjust the shower tray support until perfectly level along both sides.

4. TILING AND INSPECTION OPENING



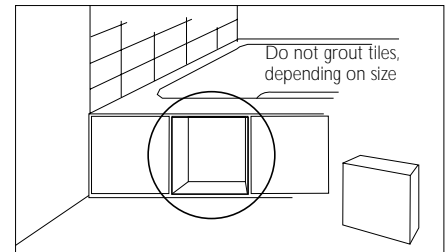
A. Tiling the walls

When tiling above the shower tray support please ensure that the tiles are fixed as exactly as possible to the marking lines on the wall connection parts.



B. Tiling the shower tray support

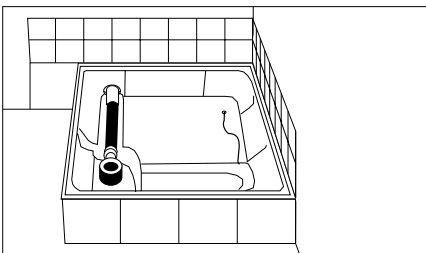
Use suitable adhesive (dispersion or flexible adhesive). Apply tiles flush with the marking lines.



C. Inspection opening

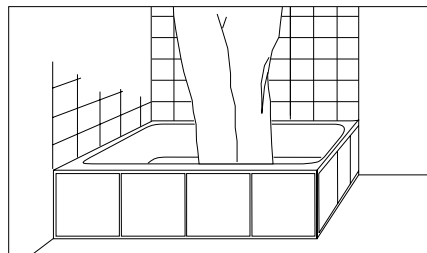
You should leave a small part of the drainage area free of tile grouting for purposes of checking sealing and earthing. You should then cut a conical inspection opening through the ungrouted tiles.

5. WALL CONNECTIONS AND GROUTING



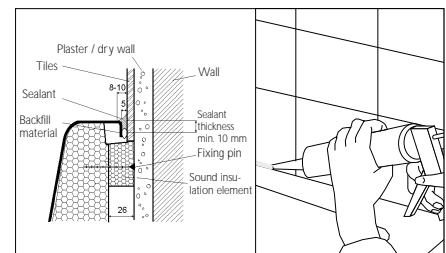
A. Drainage fittings

Install the fittings to match the shower tray height. Connect the fittings to the drainage piping.



B. Inserting the shower tray

Put the shower tray in the shower tray support and fix the drainage fittings. To optimise grouting work the shower tray can be moved around in the basin support. To ensure that the shower tray is correctly located in the support you must apply loading for a short time. To conclude, carry out a sealing check and earthing.



C. Sealing the joints

All surrounding joints must be sealed with suitable silicon grout (including the inspection opening - see 4C).

ADDITIONAL INSTALLATION ADVICE

Please observe this additional installation advice if, due to on-site or technical conditions, it is not possible to carry out installation in accordance with our instructions.

If installation is necessary due to the reasons listed below, product liability remains applicable.

CONSTRUCTION CONDITIONS

- Recess too narrow
- Uneven walls not at right angles

If the wall connection elements cannot be fixed due to the recess being too narrow, or due to uneven walls or walls not at right angles, the shower tray support must be installed using the shower tray edge profile.

Contrary to the installation instructions, the shower tray must be installed before tiling. This installation means that damage to the shower tray cannot be excluded, and replacing the shower tray becomes problematical.

A minimum distance between support and wall of approx. 17 mm must be ensured. If the dimensions are too small the wall must be broken out or a smaller shower tray must be installed.

TECHNICAL CONDITIONS

- Dimensional tolerances

Dimensional tolerances of shower tray are possible for production reasons.

If it is not possible to correctly locate the shower tray in the support edge area or on the floor beneath the support (shower tray tips or rocks), we recommend that you even out the tolerances with hardening foam to construct your own support, or even out the floor.

In order to prevent gluing the shower tray to the support, a suitable separating material (e.g. plastic film) can be laid across the fresh foam before the shower tray is inserted. Moving the shower tray from side to side within the support is necessary in order to ensure that the joints are of optimal width and thickness (correct structural joint).

After aligning the shower tray in the support, the shower tray can be fixed against subsequent sideways movement using silicon or tile adhesive blobs along the front area.



FLAME-RESISTANT
Building materials class -
DIN 4102 B1
Polystyrene mould

KALDEWEI
Europe's No.1 in Baths